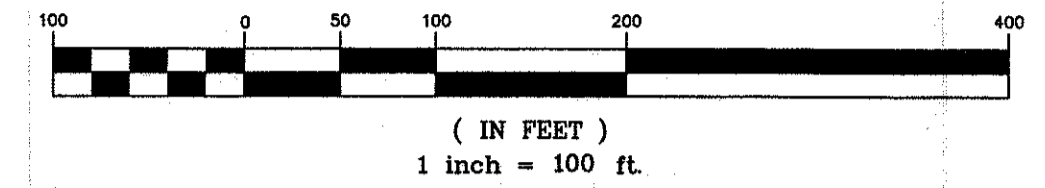


# LAND SURVEY PLAT

OF BLUE RIVER ESTATES, MOUNTAIN VIEW, AND A PORTION OF BLUE RIVER ESTATES, SHERWOOD FOREST,  
 LOCATED IN SECTIONS 19 & 30, TOWNSHIP 7 SOUTH, RANGE 77 WEST OF THE 6TH P.M.,  
 TOWN OF BLUE RIVER, COUNTY OF SUMMIT, STATE OF COLORADO  
 SHEET 2 OF 4

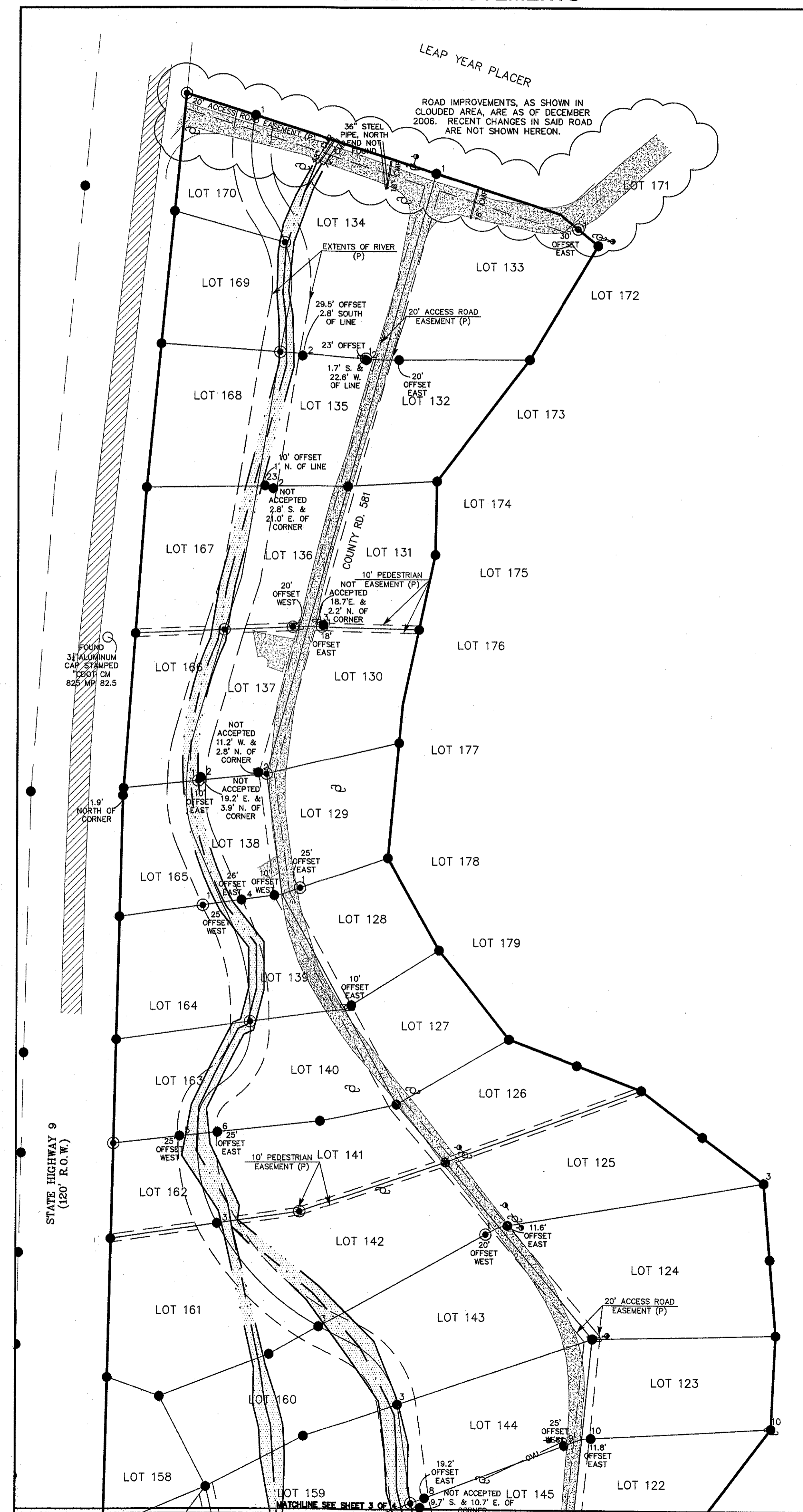
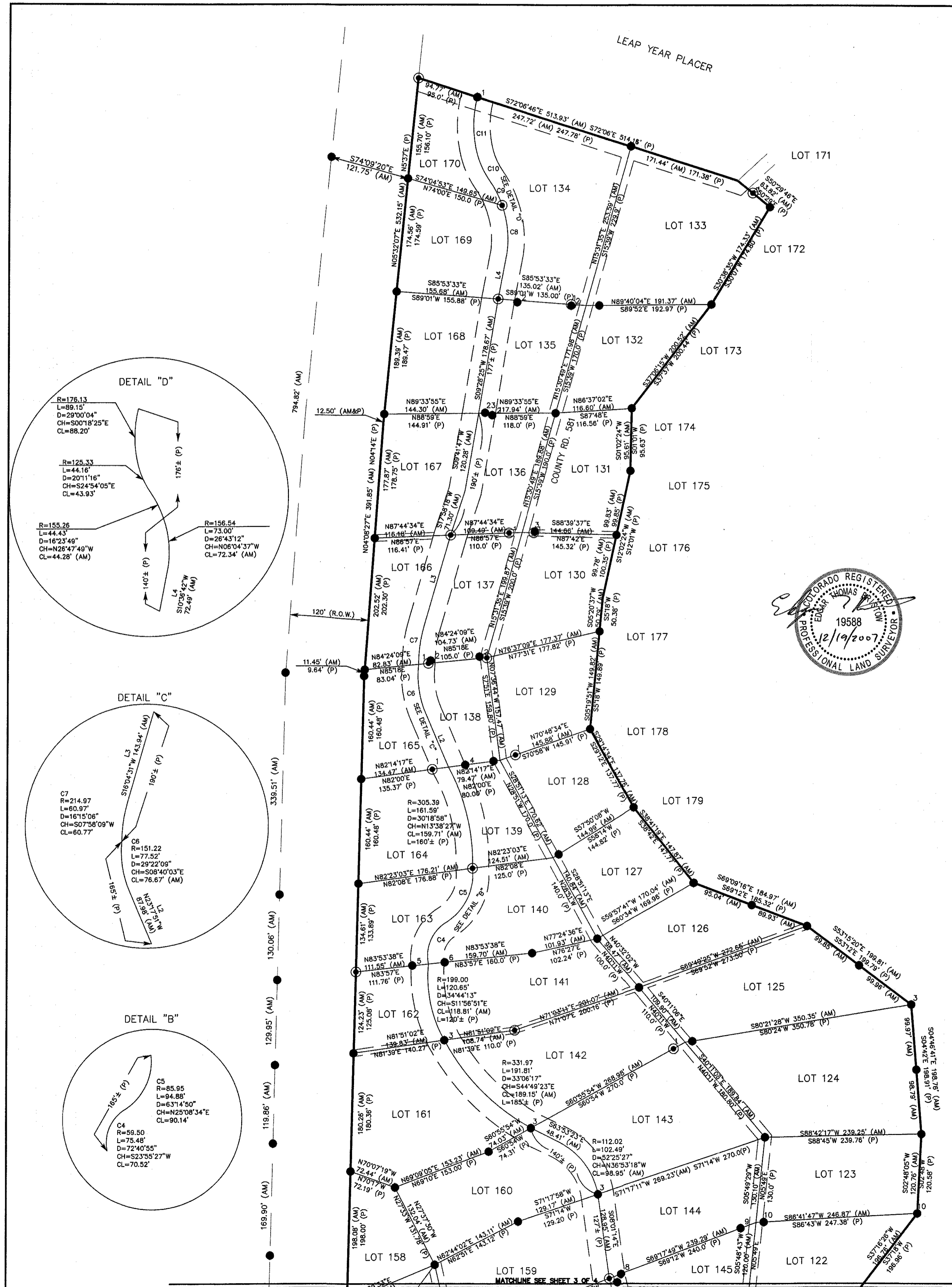


GRAPHIC SCALE



## BOUNDARY INFORMATION

## MONUMENTS AND IMPROVEMENTS



### IMPROVEMENTS LEGEND:

- TELEPHONE RISER
- GUY POLE
- UTILITY POLE
- LIGHT POLE
- ELECTRIC RISER
- OVERHEAD UTILITY LINE
- STORM LINE
- GRAVEL ROAD
- WELL
- PER PLAT OF BLUE RIVER ESTATES - MOUNTAIN VIEW SUBDIVISION RECORDED WITH SUMMIT COUNTY AT RECEPTION #92845
- PER PLAT OF BLUE RIVER ESTATES - SHERWOOD FOREST SUBDIVISION RECORDED WITH SUMMIT COUNTY AT RECEPTION #92845
- AS MEASURED AT TIME OF SURVEY
- CORRUGATED METAL PIPE
- CABLE RISER
- CONIFEROUS TREE (SEE NOTE #14)
- PROPANE TANK
- ASPHALT ROAD
- APPROXIMATE CENTERLINE OF RIVER (WIDTH VARIES)
- APPROXIMATE LIMITS OF RIVER

### MONUMENT LEGEND:

- SET #5 REBAR W/3 1/4" ALUMINUM CAP, STAMPED "FLATRONS SURV 19588"
- SET OFFSET MONUMENT (OFFSET AS LABELED HEREON)
- FOUND CHISELED "+" ON STONE
- FOUND #4 REBAR, WITH NO CAP
- FOUND #5 REBAR W/YELLOW PLASTIC CAP (UNLESS OTHERWISE NOTED), STAMPED "BASELINE LS 23901"
- FOUND #5 REBAR W/PLASTIC CAP, STAMPED "LS 18974 ALPINE SURVEY"
- FOUND #5 REBAR W/YELLOW PLASTIC CAP, "RLS 10847"
- FOUND #5 REBAR W/ALUMINUM CAP, STAMPED "25.4 WC PE PLS 33428"
- FOUND #4 REBAR W/RED PLASTIC CAP, STAMPED "ALPINE SURVEYORS LS 9936"
- FOUND #5 REBAR W/ALUMINUM CAP, STAMPED "PE PLS 33428"
- FOUND #4 REBAR W/ORANGE PLASTIC CAP (UNLESS OTHERWISE NOTED), STAMPED "PROP COR LS 27924"
- FOUND #5 REBAR W/2" ALUMINUM CAP, STAMPED "TERRY C. BARNES 20 FT WIT. COR PLS 15242"
- FOUND #5 REBAR W/2" ALUMINUM CAP, STAMPED "TERRY C. BARNES 25 FT WIT. COR PLS 15242"
- FOUND #5 REBAR, NO CAP
- FOUND 1" STEEL PIPE, NO CAP
- FOUND #4 REBAR W/YELLOW PLASTIC CAP, "RLS 10847"
- FOUND #4 REBAR W/RED PLASTIC CAP, STAMPED "TERRY C. BARNES LS 15242"
- FOUND #5 REBAR W/2" ALUMINUM CAP, STAMPED "TERRY C. BARNES 10.33 FT WIT. COR PLS 15242"
- FOUND #5 REBAR W/BROKEN BLUE PLASTIC CAP, ILLEGIBLE
- FOUND #5 REBAR W/2" ALUMINUM CAP, STAMPED "ALPINE SURVEYORS LS 18974"
- FOUND #5 REBAR W/ALUMINUM CAP, STAMPED "R.B. BYREM PLS 20142"
- FOUND #4 REBAR W/YELLOW PLASTIC CAP, STAMPED "LS 10047"
- FOUND #5 REBAR W/YELLOW PLASTIC CAP, STAMPED "PEAK SURVEY LS 4074"
- FOUND #4 REBAR W/RED PLASTIC CAP, ILLEGIBLE
- FOUND 1 1/2" STEEL PIPE
- FOUND #5 REBAR W/RED PLASTIC CAP, STAMPED "LS 37719"
- FOUND #5 REBAR W/ALUMINUM CAP, STAMPED "WC 10' LS 27924"

**LAND SURVEY PLAT**  
 PREPARED FOR  
 Town of Blue River

SHEET 2 OF 4

DRAWN BY: M VOYLES	Flatirons, Inc. - Surveying, Engineering & Geomatics 3825 IRIS AVENUE BOULDER, CO 80303 PH: (303) 443-7001 FAX: (303) 443-9830 Established 1983	555 FOURTH AVENUE LONGMONT, CO 80501 PH: (303) 776-1733 FAX: (303) 776-4355 www.flatirons.com
DATE: DECEMBER 19, 2007	INT: DATE:	REVISIONS:
FSI JOB NO. 06-51,307	CHECKED BY: ETB/WW/JWG	

COPYRIGHT 2007-2008 FLATRONS, INC.