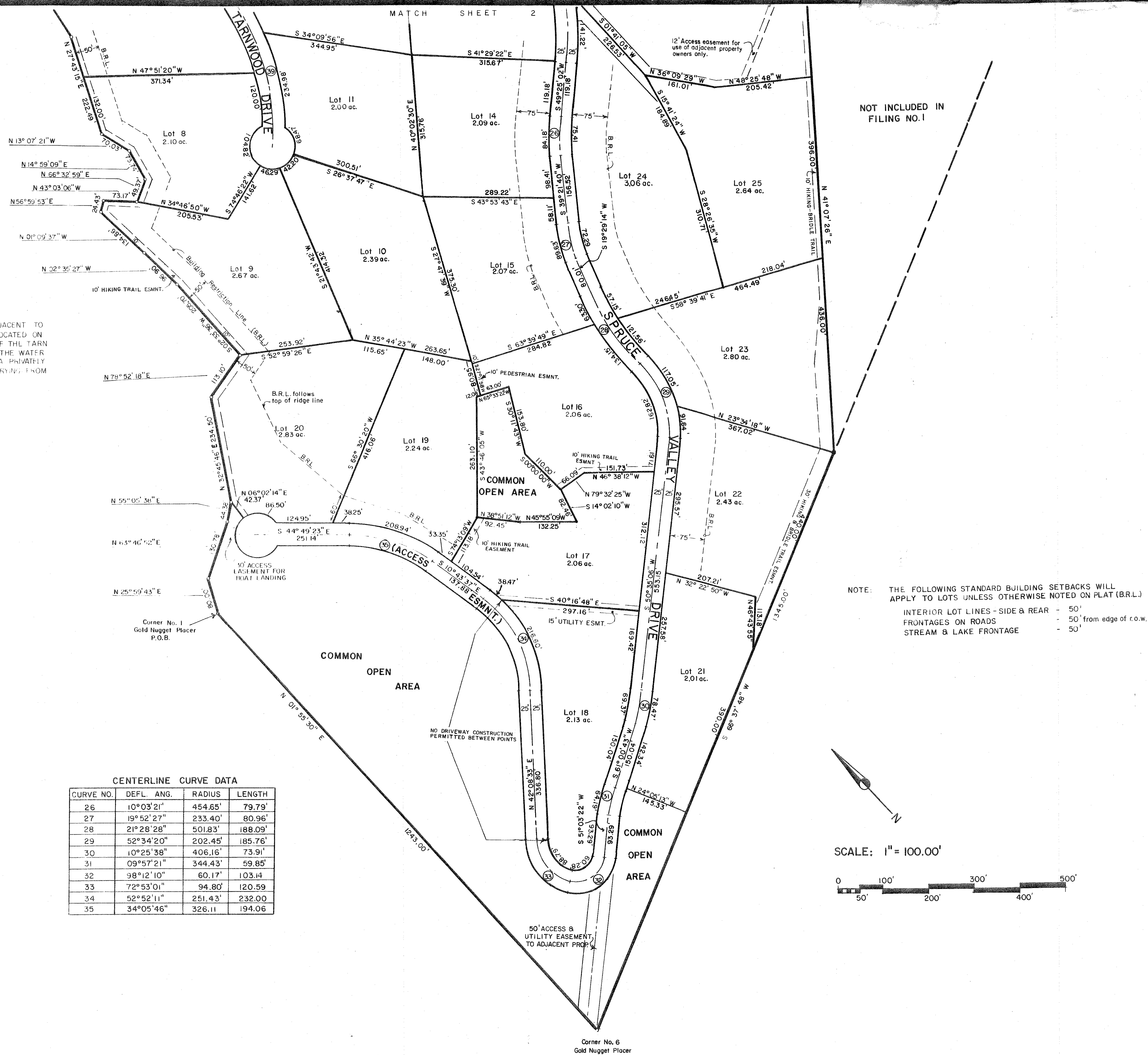


Spruce Valley Ranch

blue river, colorado



GOOSE

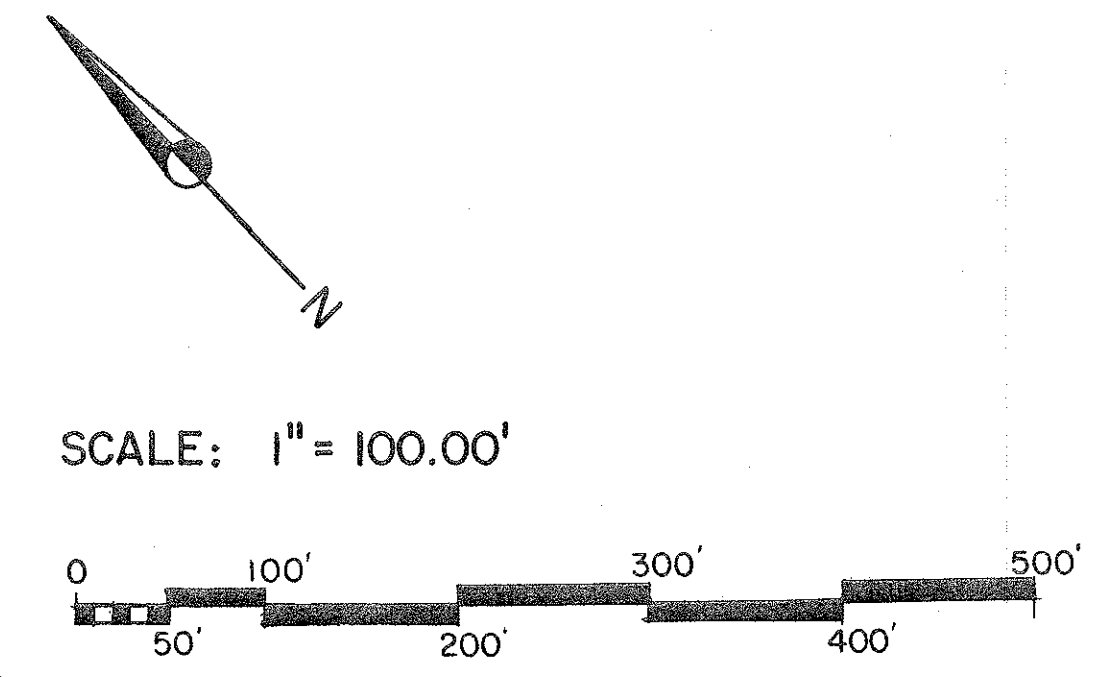
PASTURE

TARN

NOTE: PROPERTY LINE SHOWN ADJACENT TO GOOSE PASTURE TARN IS LOCATED ON THE "HIGH BEACH LINE" OF THE TARN AND IS SEPARATED FROM THE WATER SURFACE SHORE LINE BY A PRIVATELY OWNED STRIP OF LAND VARYING FROM 5 TO 10' IN WIDTH.

CENTERLINE CURVE DATA

CURVE NO.	DEFL. ANG.	RADIUS	LENGTH
26	10°03'21"	454.65'	79.79'
27	19°52'27"	233.40'	80.96'
28	21°28'28"	501.83'	188.09'
29	52°34'20"	202.45'	185.76'
30	10°25'38"	406.16'	73.91'
31	09°57'21"	344.43'	59.85'
32	98°12'10"	60.17'	103.14'
33	72°53'01"	94.80'	120.59'
34	52°52'11"	251.43'	232.00'
35	34°05'46"	326.11'	194.06'



Corner No. 6
 Gold Nugget Placer